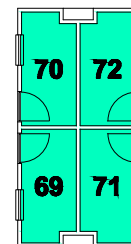
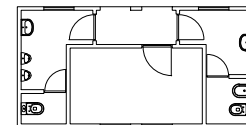
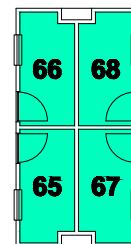
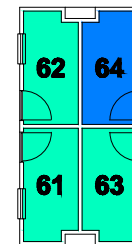
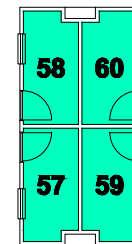
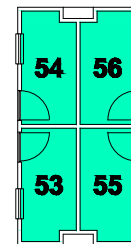
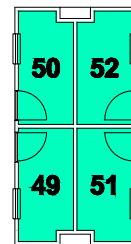
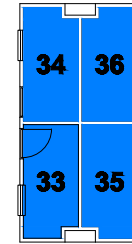
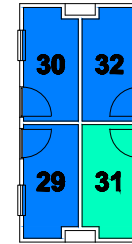
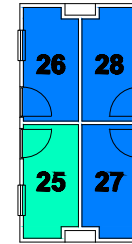
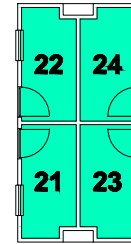
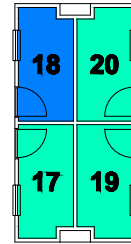
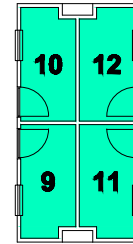
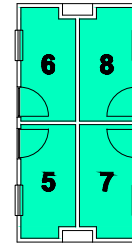
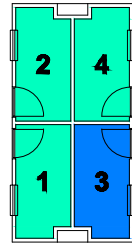
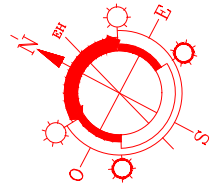
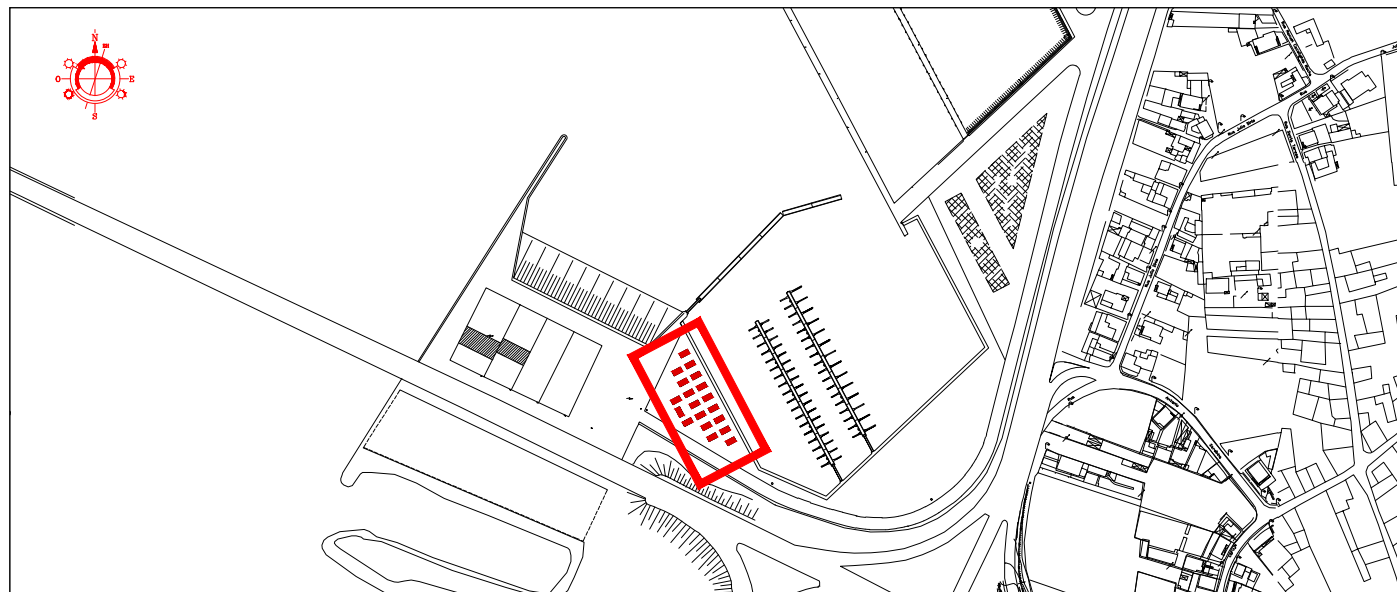


ARMAZÉNS DE APRESTOS DA PEQUENA PESCA



- INFRAESTRUTURA DE APOIO (WC)
- ESPAÇOS OCUPADOS (3 ; 18; 26 a 30 ; 32 a 37 ; 64)
- ESPAÇOS DISPONÍVEIS (1 a 2 ; 4 a 17 ; 19 a 25 ; 31 ; 38 a 63 ; 65 a 71)

Estão disponíveis ligações de água e eletricidade a cada módulo (ver taxas)



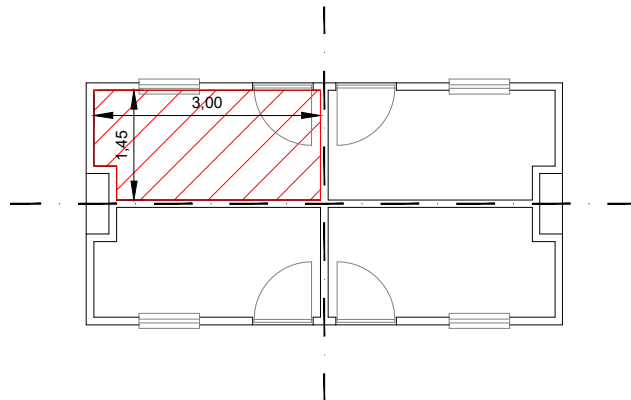
A P A - ADMINISTRAÇÃO DO PORTO DE AVEIRO, S.A.
 EDIFÍCIO 9 FORTE DA BARRA - 3830-565 GAFANHA DA NAZARÉ
 APARTADO 91 3834-908 GAFANHA DA NAZARÉ
 TEL. 351 234393300 - FAX. 351 234393399
 EMAIL: geral@portodeaveiro.pt
 www.portodeaveiro.pt

PORTO DE PESCA COSTEIRA
 ARMAZÉNS DE APRESTOS DA PEQUENA PESCA

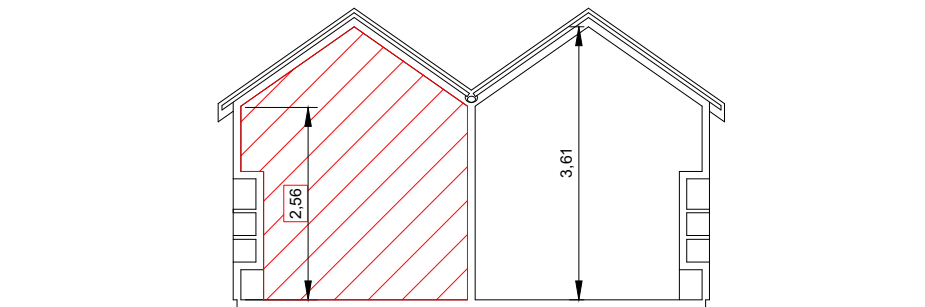
PLANTA DE IMPLANTAÇÃO

ESCALA: 1/200
 ESCALA: 1/5000

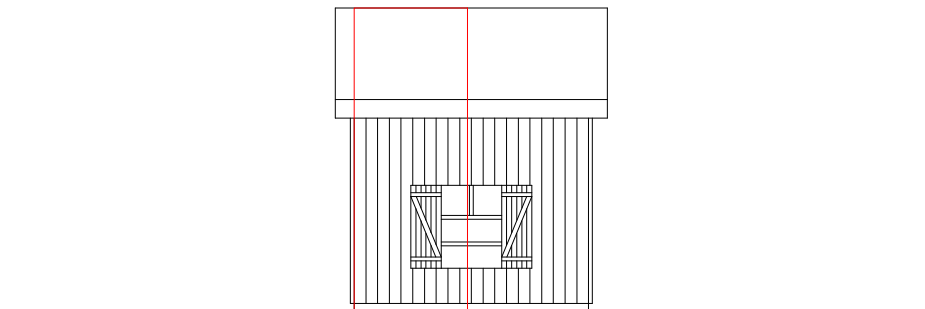
ARQUITETURA



PLANTA



CORTE LONGITUDINAL



ALÇADOS (instalação dos contadores)



Módulo individual